

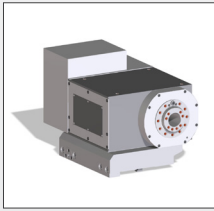
KELLENBERGER VM1000

THE INNOVATIVE PLATFORM
CONCEPT FOR INTERNAL AND
EXTERNAL CYLINDRICAL GRINDING



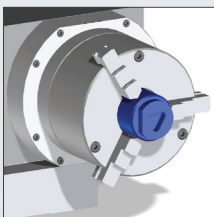
KELLENBERGER VM1000

THE INNOVATIVE PLATFORM CONCEPT FOR INTERNAL AND EXTERNAL CYLINDRICAL GRINDING



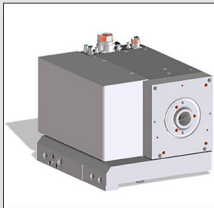
WORK HEAD WITH DIRECT DRIVE 200

- For high-precision cylindrical grinding
- Rotating speed 1-1,000 rpm
- Roundness accuracy $< 0.4 \mu\text{m}$
- Lower part with fine adjustment $\pm 1.5'$



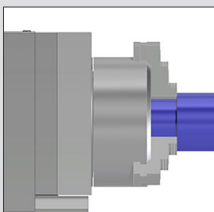
C-AXIS 100 & 200

- For non-circular workpieces
- For thread grinding



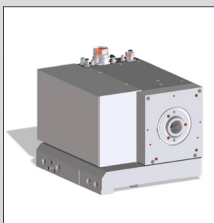
WORKPIECE HEADSTOCK 100

- For high-precision cylindrical grinding n1-1000 min⁻¹
- Roundness accuracy $< 0.4 \mu\text{m}$
- Lower part with fine adjustment $\pm 1.5'$
- Flying load 100 Nm



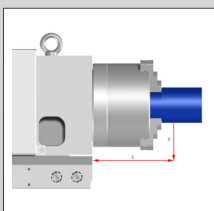
LOAD WITH CHUCKED WORK

- 320 Nm with direct drive



WORK HEAD WITH DIRECT DRIVE 50

- For high-precision cylindrical grinding
- Rotating speed 1-3,000 rpm
- Roundness accuracy $< 0.4 \mu\text{m}$
- Lower part with fine adjustment $\pm 1.5'$



LOAD WITH CHUCKED WORK

- 100 Nm with direct drive



ONE-OF-A-KIND KINEMATICS

- Reduction to two highly accurate linear and rotational axes each with positioning in nanoscale
- No auxiliary axes are necessary for dressers or measuring systems
- C-axis for non-cylindrical workpieces and thread grinding
- Simplified set-up and increased accuracy
- A compact machine with a wide range of parts of up to $\varnothing 300 \times 600 \text{ mm}$

HYDROLIN® - HIGH-DYNAMICS HYDROSTATIC LINEAR AXES

- Positioning accuracy in nanoscale
- The wear-free linear motors feature integrated heat dissipation

BASIS

- FEM-optimized casting bed for high stability and durability
- Mechanical separation of machine and periphery for thermal stability and prevention of vibrations

THE ULTIMATE INTERPLAY OF PRECISION & PERFORMANCE



ERGONOMICS

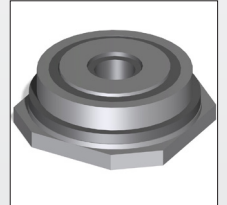
- Optically and ergonomically advanced design
- Good overview of the grinding process
- Centrally arranged and easily accessible interfaces for table constructions
- Swivel- and height-adjustable control panel for optimized usability
- Well thought-out accessibility for inexpensive maintenance and service

CNC CONTROL 31I-B

- 19" LCD color screen with touch function
- BLUE Solution teach-programming with OBJECT Guide for guided and easy program creation on workpiece
- Windows 10 IoT IPC operating system
- A handheld device with security and setup functions
- Ethernet (RJ45) and USB 2.0 connection

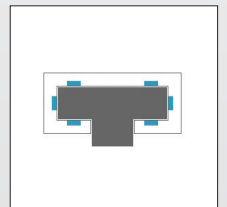
HYDROSTATIC B-AXIS

- Fully-fledged NC axis
- Pre-stressed hydrostatic guidance
- Direct drive



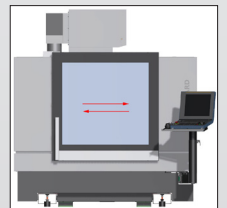
HYDROSTATIC X- / Z-AXIS

- Pre-stressed hydrostatic guidance
- No stick-slip, no wear
- The finest correction possibilities
- High form accuracy
- Direct drive



AUTOMATIC SLIDING DOOR

- Relief for the operator
- Faster workpiece changeover times



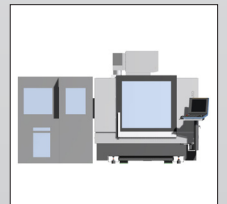
TRANSPORT

- Efficient commissioning due to different lifting options

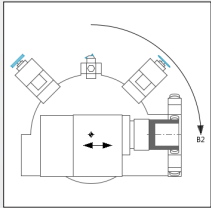


AUTOMATION

- Profinet interface
- Loading cell with high autonomy
- Project-specific solutions on request

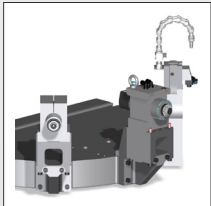


WORKPIECE HOLDER WITH DRESSING TURRET



WORKPIECE CARRIER

- Work head
- Max. 3 dressers
- Steady rests
- Power clamping device
- B2-axis



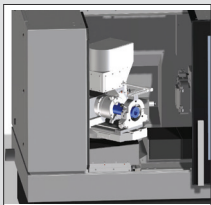
DRESSING UNITS

- Max. 3 dressers
- Up to 2 rotating dressers
- Firm dressing diamonds
- Form and profile rolls



STEADY RESTS

- Hydraulic steady rests
- 3-jaw steady rests



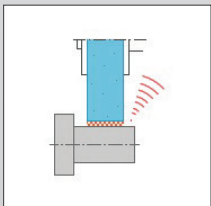
B2-AXIS

- Easy workpiece changeover
- Minimized dresser collision problematics
- Collision-free measuring position



INTEGRATED LIFTING SYSTEM

- Ergonomic Lifting system for table constructions

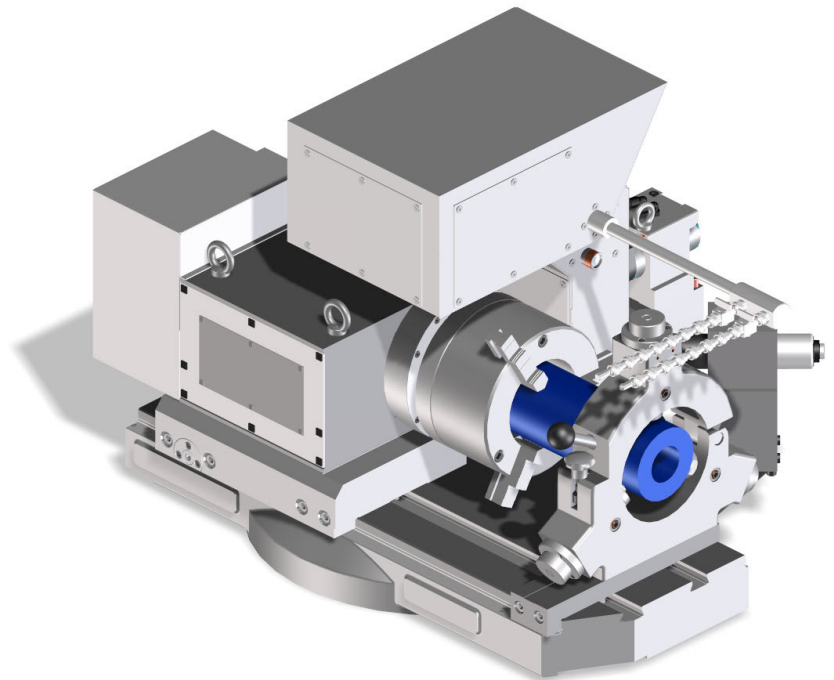


CONTACT SENSING

- Gap control with up to 4 sensors
- Operation and display integrated into the controller

WORKPIECE CARRIER

Various steady rests can be installed on the workpiece carrier, such as tracking hydraulic grinding steady rests. The integrated lifting system can be used for lifting table constructions. This saves the crane of the machine.



B2-AXIS ROTATING PART

An additional B2-axis can be added optionally on the workpiece carrier side. This offers the following advantages:

- Collision-free dressing
- Improved accessibility while measuring
- Easy workpiece changeover
- 3 dressing positions
- Automation of the loader system

The high-precision direct drive rotation axis can alternate between the grinding and dressing positions in < 2 seconds. The B2-axis has a system resolution of 0.00001° and a repeatability of <0.5“.

C-AXIS

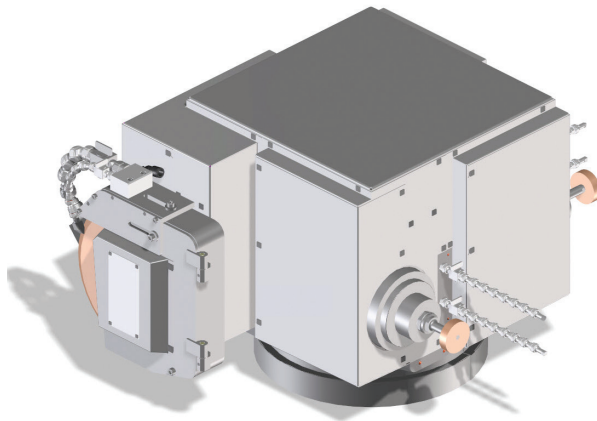
With the possibility of X- and C-axis interpolation, KELLENBERGER VM1000 allows grinding of non-cylindrical forms such as polygons, free contours and eccentrics. The rotary encoder with resolution of 0.0001° degree is installed directly on the work head. The non-circular motion is superimposed onto the grinding motions, so that the grinding machine can fall back on any grinding cycle including handwheel release for the X-axis.

EXTERNAL & INTERNAL GRINDING

ROTATING PARTS / EQUIPMENT

WHEEL HEAD

The modular construction of the turret wheel head allows the 4 grinding spindle positions to be specified individually. The Internal grinding wheels measure up to max. \varnothing 150 x 40 mm. The external grinding wheels up to \varnothing 300 x 40 mm. Thanks to the flexible equipment, inside and outside diameters can be ground as well as flat surfaces.



B1-AXIS ROTATING PART

A high-precision rotating axis is installed for faster positioning of the wheel head. Workpiece changeover lasts < 2.5 seconds. The B1-axis with direct drive has a system resolution of 0.00001° and a repeatability of <0.5".

With the B1-axis, up to 4 grinding spindle positions can be swiveled to the grinding position. Additionally, a fixed tactile measuring probe attached to the base body can be used for measurement tasks. The tactile measuring probe can measure internal and external diameters, shoulder positions and shoulder distances.

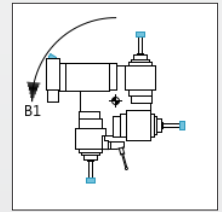
WORKPIECE MEASUREMENT SYSTEM

Automatic grinding wheel measurement. When swiveling the wheel head into the desired angular positions, the positions of the grinding wheel edges are automatically calculated. This offers the following advantages for the user:

- Programming with the effective masses according to the workpiece drawing and regardless of the swivel angle of the wheel head
- Renewed calibration of the swiveled grinding wheel is not required
- Simple and quick recording of the grinding wheel data when re-equipping the machine
- Workpiece management for external, surface and internal grinding is already integrated

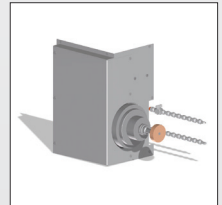
TURRET WHEEL HEAD

- Individually configurable
- Compact
- 4 spindle positions
- FEM optimization
- Aluminum cooling-line



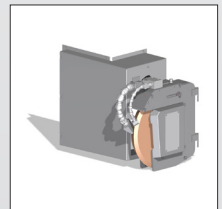
INTERNAL GRINDING EQUIPMENT

- Oil-air lubricated HF internal grinding spindle of max. 120,000 rpm (depending on the spindle)
- Powerful and universal
- With or without process coolant through internal grinding spindle
- Grinding wheel measurements up to \varnothing 150 x 40 mm



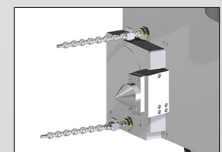
EXTERNAL GRINDING EQUIPMENT

- External grinding with water-cooled motor spindles and 12.7 kW performance
- Oil-air lubrication guarantees long durability
- Grinding wheel measurements up to \varnothing 300 x 40 mm



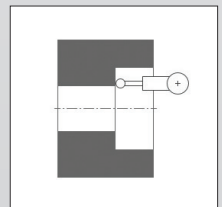
SET-UP POINT INTERFACE

- For attaching a set-up point to set up steady rest components.



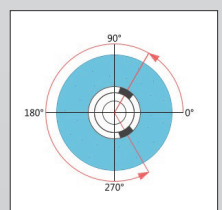
TACTILE MEASURING HEAD

- Mounted on the wheel head
- Orientation of the workpiece position in X-, Z- and C-position
- Active measurement of the diameter and length



BALANCING

- Mounted on the wheel head

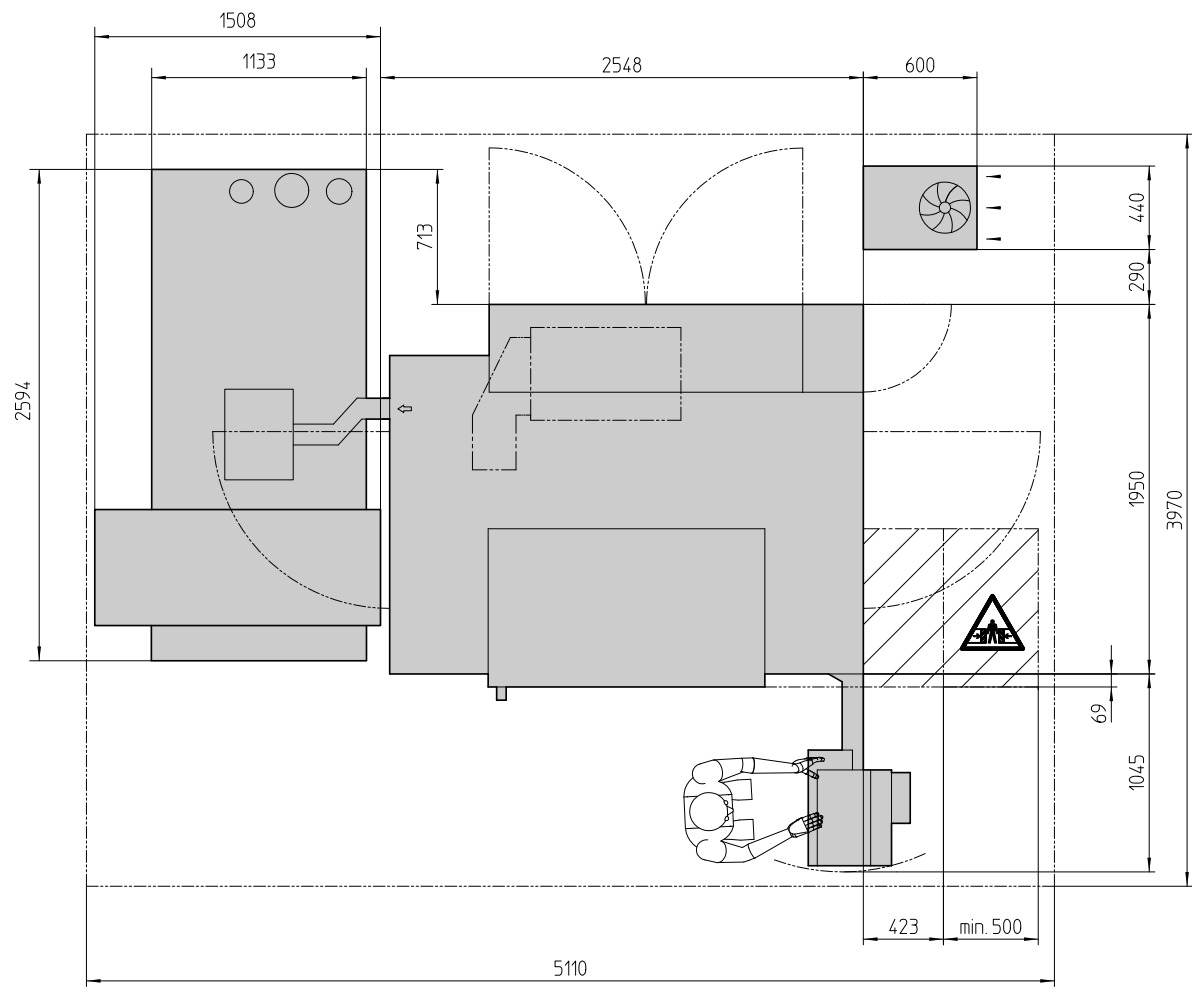


TECHNICAL DATA

Characteristics				
Max. workpiece length	600			mm
Swing diameter	<300			mm
Max. workpiece diameter	<150 / <300			mm
Supply voltage	400 / 460			V
Power consumption	35 - 80			A
Atmospheric pressure	5.5			bar
Total weight	5'800			kg
Floor loading	8'100			N/m²
X- / Z-axis				
Travel	450			mm
Speed	<20			m/min
Resolution	2.5 x 10 ⁻⁶			mm
B axis				
Instrument swivel range	330			Grad
Workpiece swivel range	225			Grad
System Resolution	0.00001° / <0.5"			Grad
Turret wheel head				
Rotational speed range (depending on the spindle)	<120'000			u/min¹
Max. number of spindles	4			-
Peripheral speed	50			m/s
Internal grinding wheel	max. 150x40			mm
Max. internal grinding length	250			mm
Mounting hole of the internal grinding spindle	150			mm
External grinding wheel	300x40			mm
Max. external grinding length	150			mm
Workhead	Workhead 50	Workhead 100	Workhead 200	
Rotational speed range	1-1500 / 1-3000	1-1000	1-1000	u/min¹
Mounting cone	MK4	MK5	MK5	-
External short taper adapter	ISO 702-1: Gr. 3	ISO 702-1: Gr. 5	ISO 702-1: Gr. 5	-
Workpiece weight	<50 / < 20	< 100	< 200	kg
Load on chucked work	< 100	< 100	< 320	Nm
System Resolution	-	-	0.0001°	Grad
CNC controller				
FANUC	FANUC 31i-B			-

Information on dimensions, weight and construction is subject to changes

SETUP PLAN





EUROPE & ASIA

Kellenberger Switzerland AG
Thannäckerstrasse 22
9403 Goldach
Tel. +41 71 242 91 11
info@kellenberger.net

AMERICA

Kellenberger Systems
1755 Brittania Drive, Unit A
Elgin, Illinois 60124
Tel. +800 8438801
info@kellenberger.com

CHINA

Kellenberger
1388 East Kang Qiao Road
Pudong, Shanghai 201319
Tel. +86 21 38108686
info@kellenberger.net

All prices and details are subject to change without notice. 1/2025

kellenberger.com

